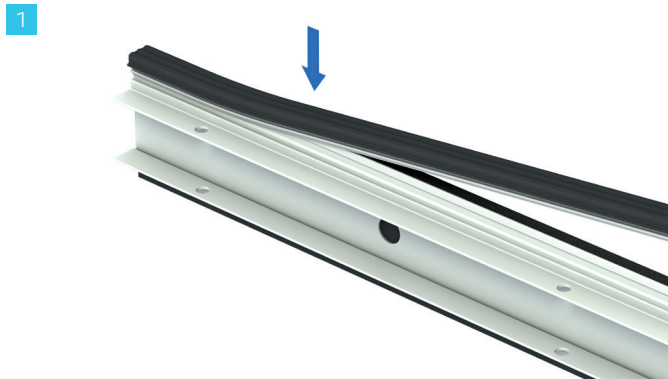


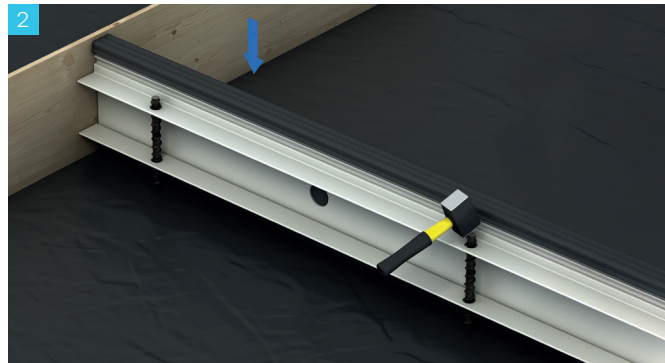
Technical Datasheet

Connolly DuraJoint® EXJ

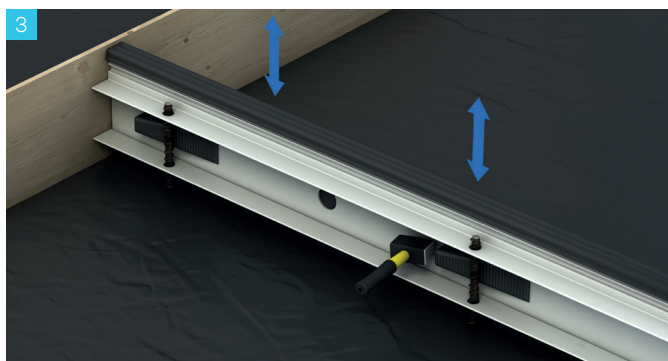
Installation Instructions



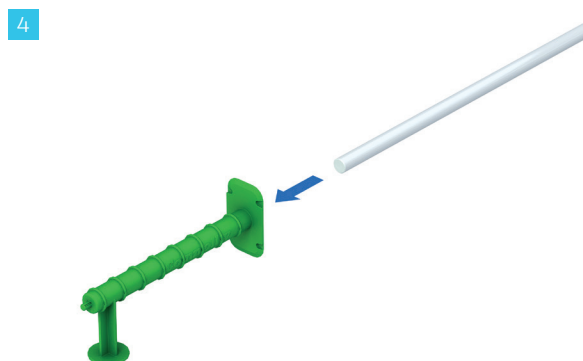
In the case where permanent capping or a rebate mould is used, ensure it is pushed firmly onto the top of the system prior to placement.



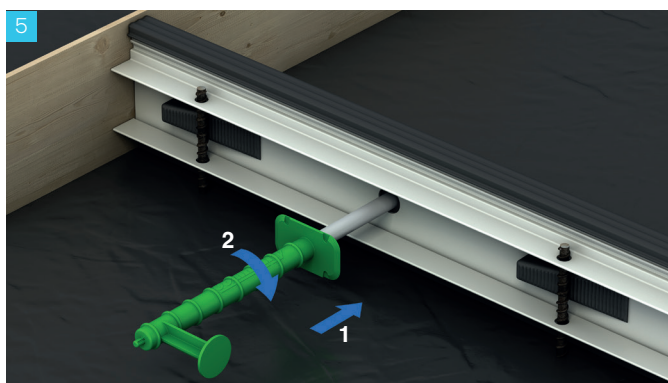
Position the expansion joint profile in the desired location and drive in the supplied pegs. Ensure the top of the peg is at least 20mm below the intended level of the finished concrete.



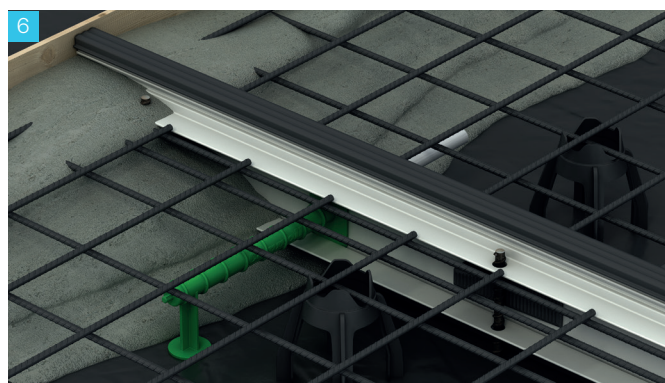
Adjust the profile to the correct height and secure by tapping in the supplied wedges.



Insert dowels into the Universal Dowel Sleeves by pressing all the way to the end of the sleeve.



Install the Universal Dowel Sleeve in the profile by pushing the dowel through the foam at the centre of the pre-punched holes and twist the sleeve 90 degrees to fix in place.



Place reinforcement and pour concrete evenly to both sides of the expansion joint at the same time. Finish surface and ensure top of joint is clear of any concrete.