

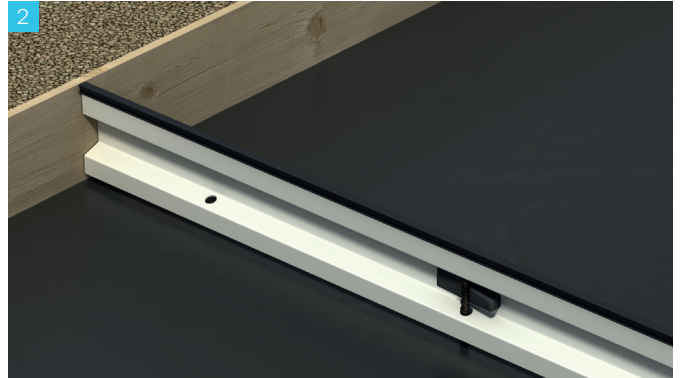
# Technical Datasheet

## Connolly DuraJoint® KJ

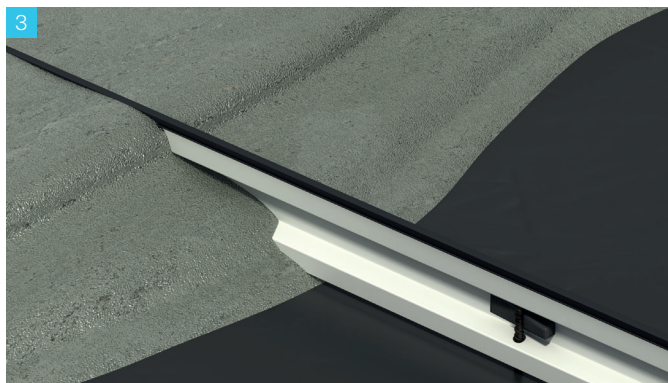
### Installation Instructions



Point key joint in desired location and drive in the supplied pegs. Note that the **longest flange** of the key joint always goes **to the top**.



Adjust the key joint to the correct height and secure by tapping in the supplied wedges. If capping strips are to be used allow the appropriate set down distance and ally capping strip prior to pouring concrete.



Place the reinforcement and pour the concrete over the key joint. Finish concrete surface to the top of the joint (**not below it**). Always pour concrete evenly to both sides of the joint and ensure concrete is compacted into the keyways.