



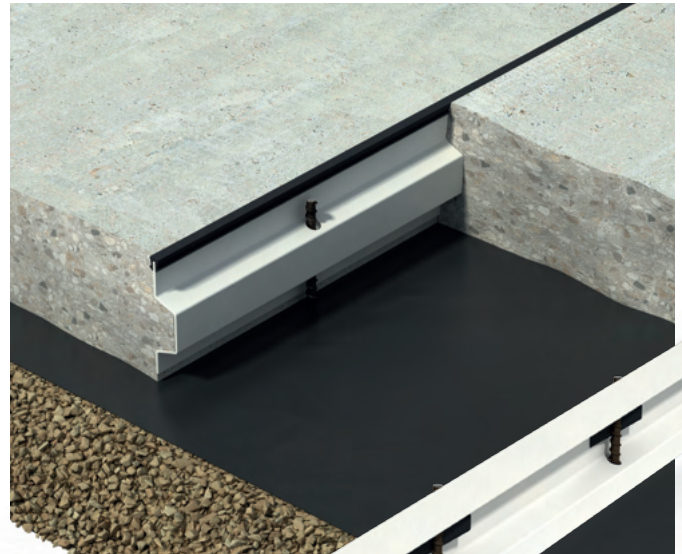
## Technical Datasheet

### Connolly DuraJoint® KJ

The Connolly DuraJoint® KJ is a continuous pour solution for concrete footpaths, cycleways, driveways, and various urban concrete pavements to form a control/contraction joint. DuraJoint® KJ is a versatile and robust corrosion-resistance leave in place formwork with a unique tongue profile that provides positive load transfer with minimal stepping. A wide range of permanent capping and rebate moulds are available to be used with DuraJoint® KJ.

#### Features:

- Enables continuous pours
- Corrosion-resistance, suitable for any applications exposed to salt-water
- Non-metallic accessories
- Minimises tripping hazard caused by tree roots or soil heave
- Surpasses the requirements of AS 3727.1:2016 Residential Pavements
- Special wedge fixing mechanism allows fast and accurate height adjustment
- Can be used to screed off which makes getting the right level quick and easy
- A range of capping for various applications
- Minimise liability risks from slip and trip claims

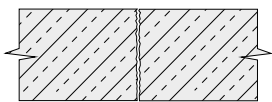


#### Unique Design of Connolly DuraJoint® KJ Profile

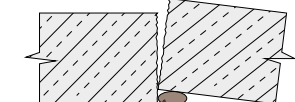
The tapered shape of the profile's keyway allows the slab segments to rotate while minimising the stepping on the top of the joint.

#### Standard Sawn or Groove Joint

1. Saw Cut



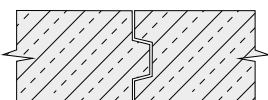
2. The root causes a tripping hazard



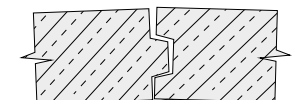
Root grown underneath the slab

#### Connolly DuraJoint® KJ

1. Joint condition before any roots grow underneath or before soil heaving

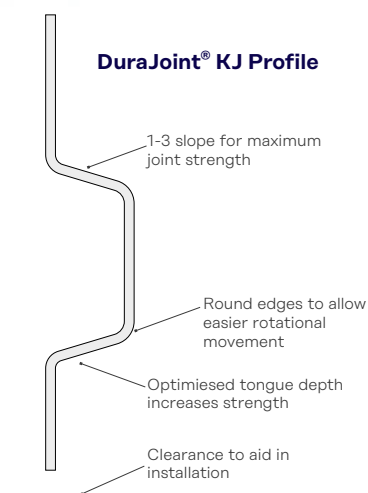


2. The key shaped profile restricts the movement of the slab resulting in minimal stepping on the top of the joint



Root grown underneath the slab

#### DuraJoint® KJ Profile



# Technical Datasheet

## Connolly DuraJoint® KJ

### Packing details

DuraJoint® Key Joint 100mm x 3.0m - Box of 25  
Kit box containing 25 x Pegs & Wedges (4-pack)



### Connolly DuraJoint® Family

Connolly DuraJoint® EXJ and DuraJoint® KJ form a product family that is developed to fulfil the councils and contractors needs in accordance with AS 3727.1:2016 Residential Pavements.



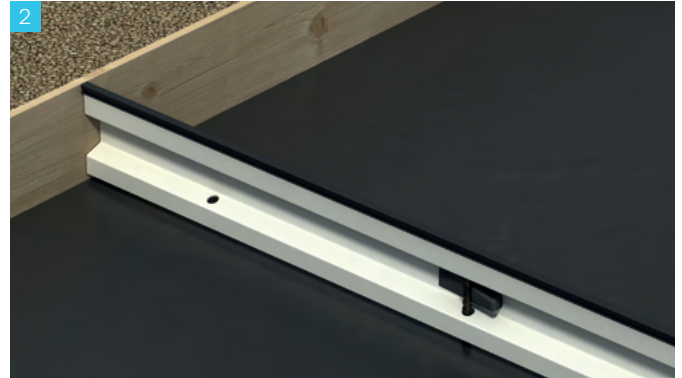
# Technical Datasheet

## Connolly DuraJoint® KJ

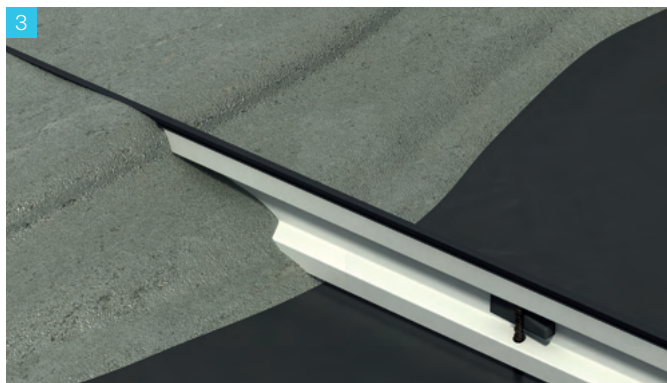
### Installation Instructions



Point key joint in desired location and drive in the supplied pegs. Note that the **longest flange** of the key joint always goes **to the top**.



Adjust the key joint to the correct height and secure by tapping in the supplied wedges. If capping strips are to be used allow the appropriate set down distance and ally capping strip prior to pouring concrete.



Place the reinforcement and pour the concrete over the key joint. Finish concrete surface to the top of the joint (**not below it**). Always pour concrete evenly to both sides of the joint and ensure concrete is compacted into the keyways.